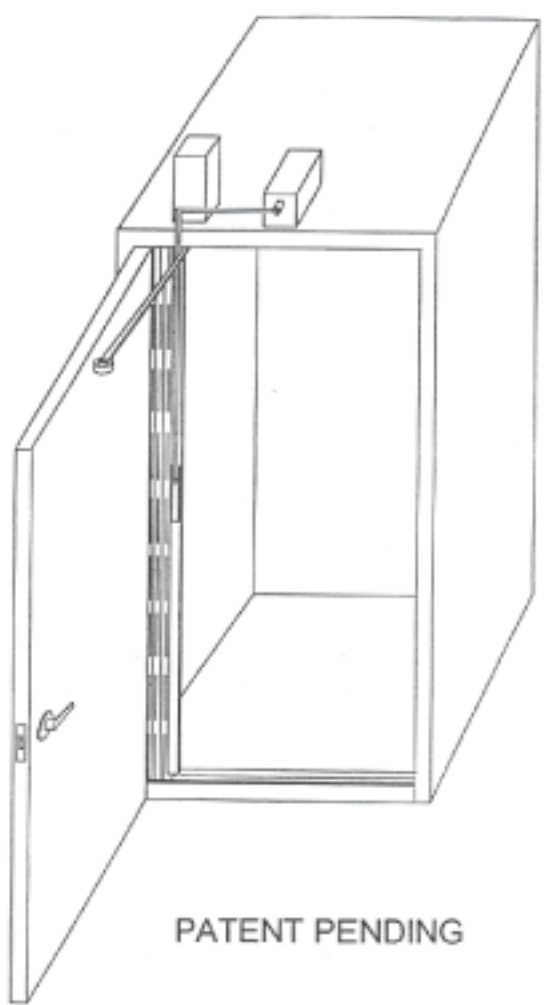
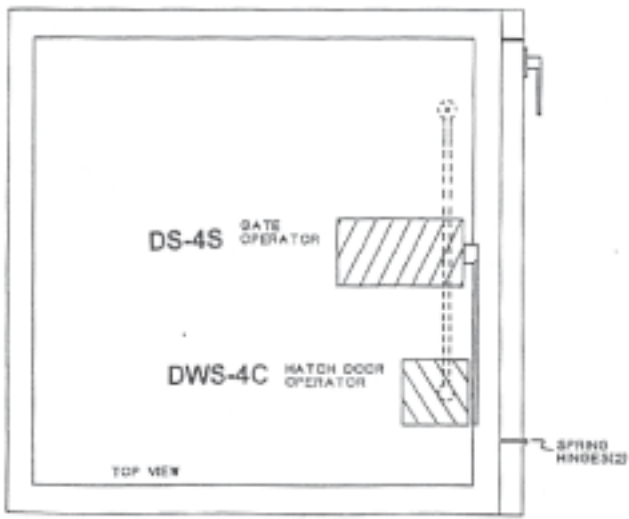
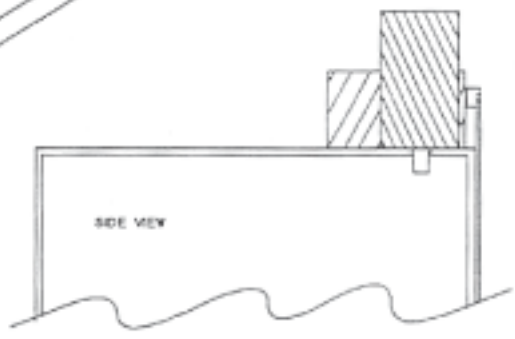
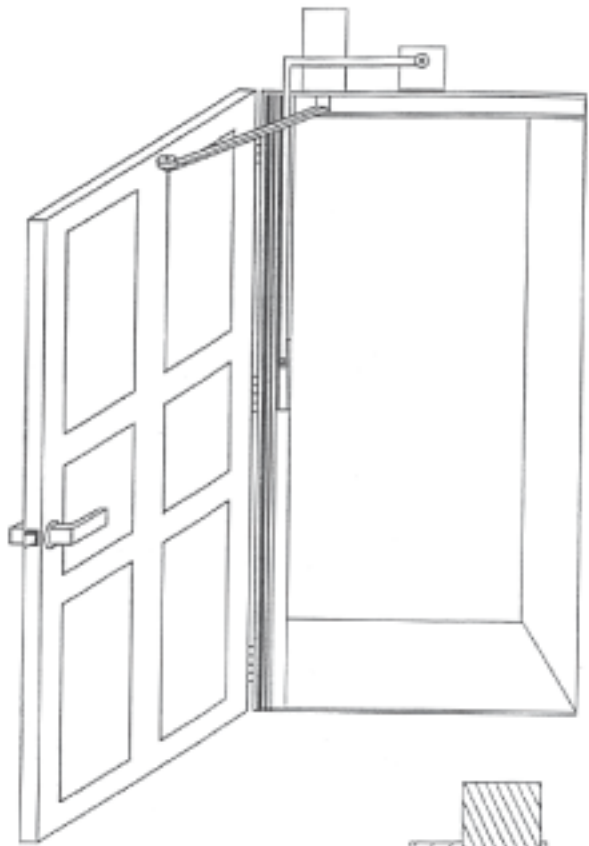


GATE AND DOOR AUTOMATION USING THE DS-4S & 4C



PATENT PENDING



DESCRIPTION

Installing both the hatch (hallway) door operator and the safety gate elevator on the cab top allows the use of one hatch door operator for all doors in the elevator shaft, reducing overall door automation cost. There will be a need for spring hinges, generally two, to allow door to follow the actuator arm as it retracts into the cab. This system allows for easy synchronization of both gate and door.

Installation Detail: L.U.L.A. Hatch Door Automation

