

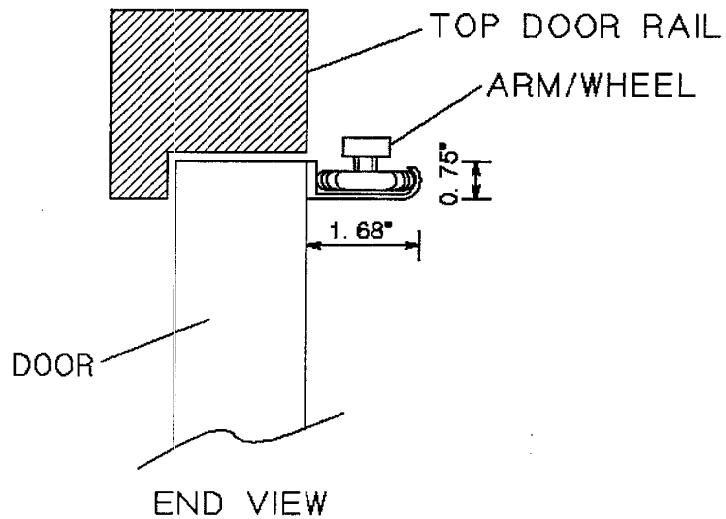
DMT Door Motion Technologies®, inc.

DS 4H (Cab Top) Hatch Door Automation

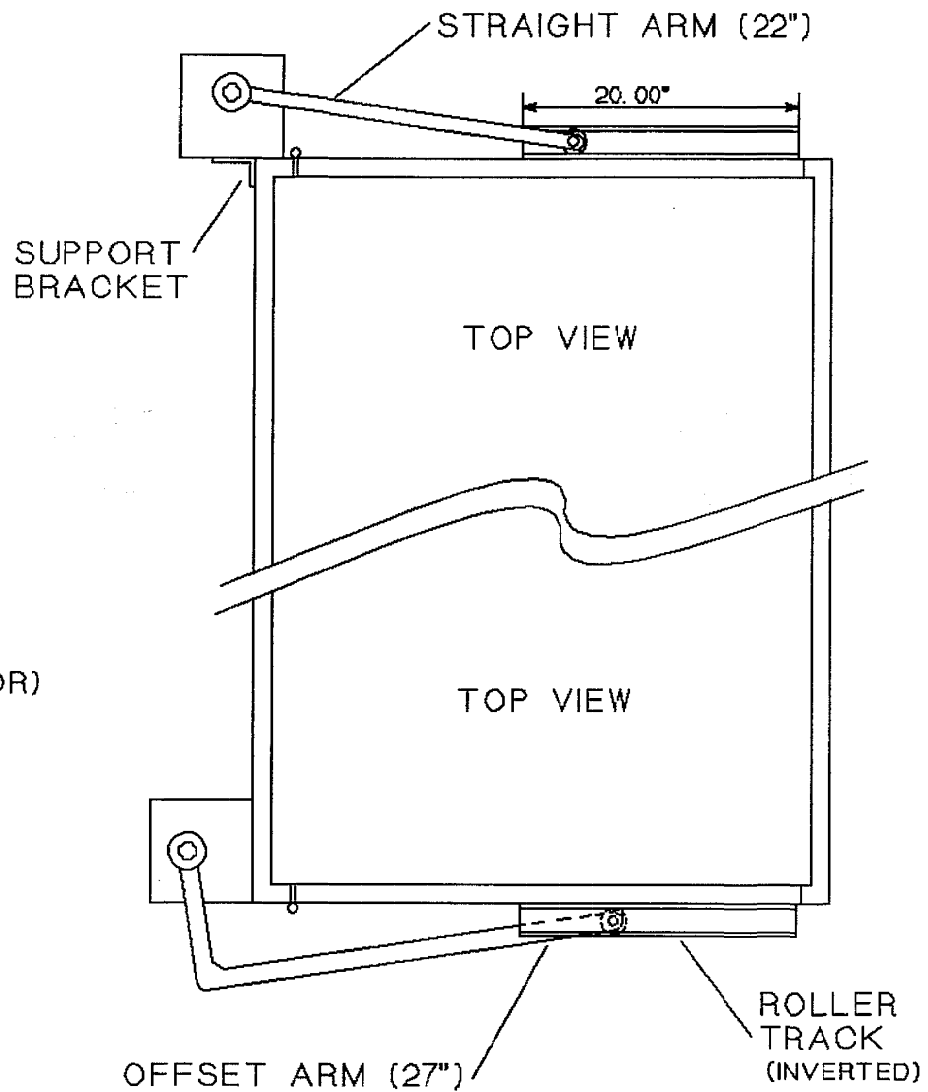
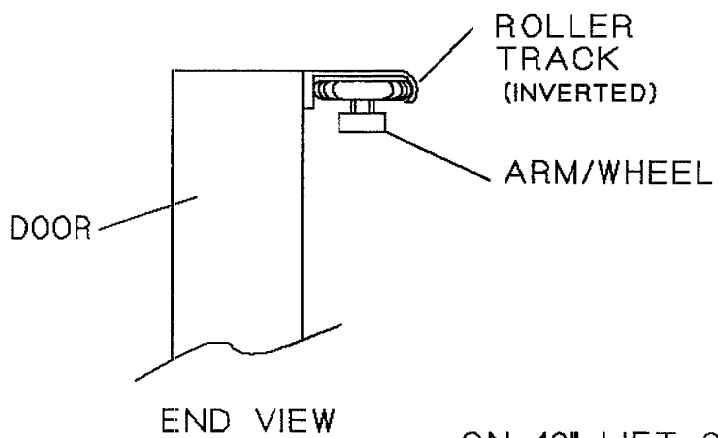
- ACTION: Bi-directional power (electromechanical)
- OPERATING VOLTAGE: 120VAC (3A nominal draw)
- CONTROL VOLTAGE: 24VDC
- BARRIER SENSING: 15lbs. or less (adjustable)
- WEATHER PROOFING: Optional
- NON-HANDED, INVERTIBLE
- INTERLOCK / ELECTRIC LOCKSTRIKE compatible
- ADA/BHMA Compliant / CSA-NRTL/C approved

Information contained herein is deemed proprietary and is to be used for informational purposes only. Other uses must be approved in writing by an officer of DMT®.
Door Motion Technologies, Inc. 6286 High Pointe Cir. Kalamazoo, MI 49024
Ph: 800 291-1659 Fx: 616 327-6158

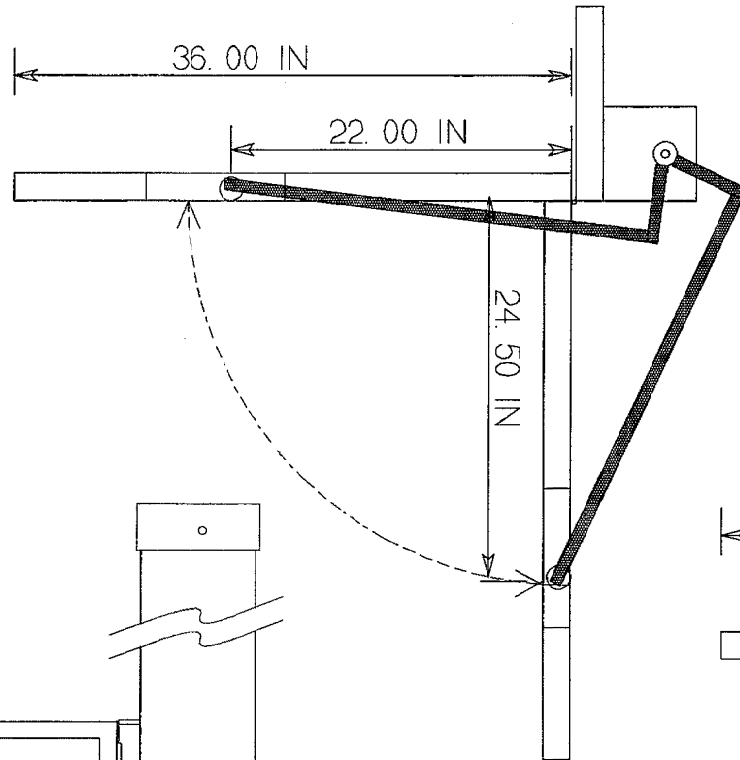
FULL SIZE DOOR



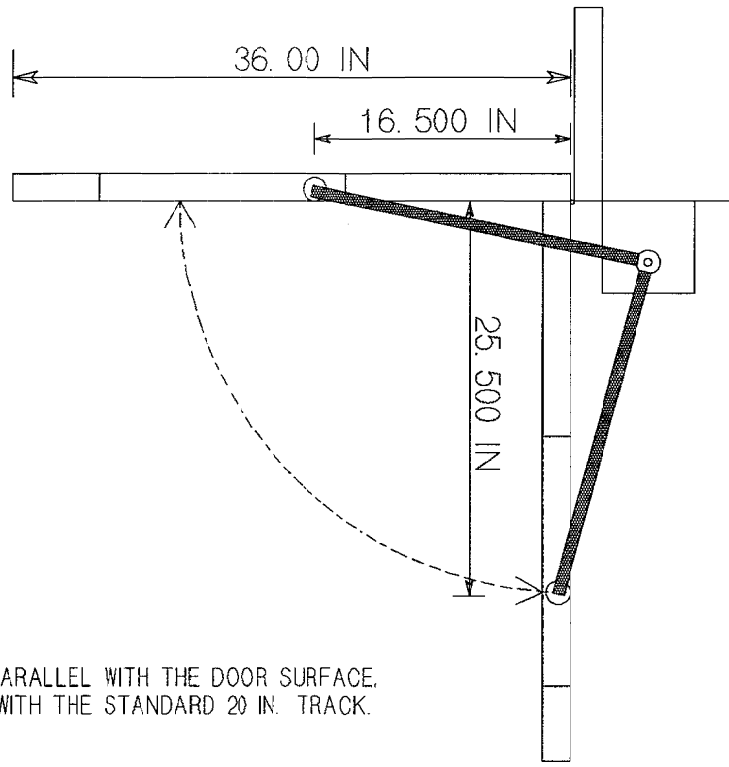
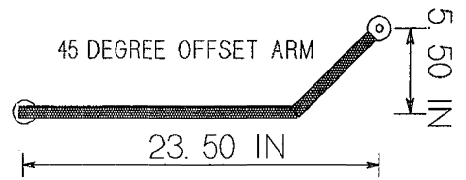
PLATFORM GATE (42" HIGH DOOR)



ON 42" LIFT GATE DOORS, IT IS PREFERABLE FOR SAFETY REASONS TO INSTALL THE ROLLER TRACK IN THE INVERTED POSITION.

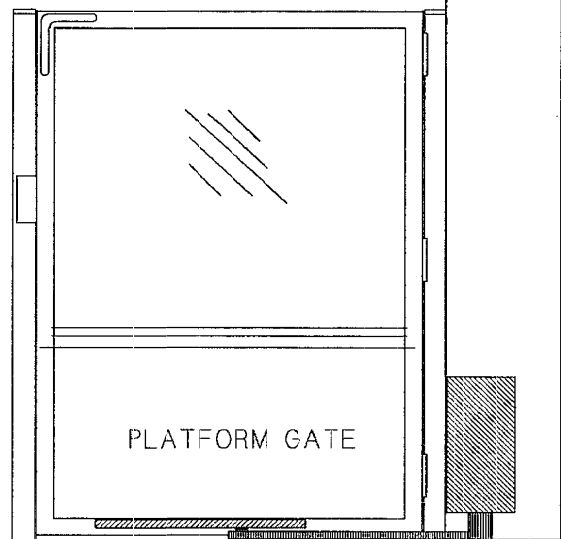


WITH DRIVE UNIT MOUNTED AROUND THE CORNER, AN L-SHAPED ARM IS NECESSARY. A SHORT 10 IN TRACK COULD BE USED IN PLACE OF THE STANDARD 20 IN TRACK. THE 45 DEGREE OFFSET ARM CAN ALSO BE USED IF THERE IS MINIMAL CLEARANCE TO AN ADJACENT WALL.



FLOOR MOUNT

WITH THE DRIVE UNIT MOUNTED PARALLEL WITH THE DOOR SURFACE, A STRAIGHT ARM IS PREFERRED WITH THE STANDARD 20 IN. TRACK.



PLATFORM GATE